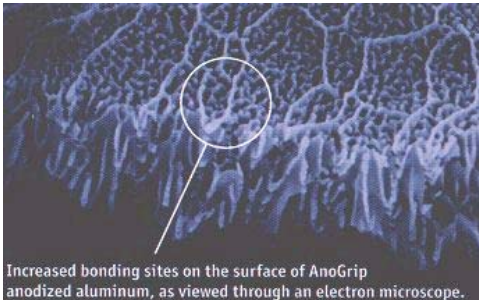


Adhesion Enhancing Solutions

If you paint, coat, bond, screen print, powder coat or virtually any other type of coating or bonding with aluminum or anodized aluminum, you need AnoGrip® and Adhere®. Our anodizing processes leave the aluminum surface with millions of microscopic pores that lock in coatings and adhesives, creating a permanent molecular bond.

Adhere is a post-anodizing process applied to *decorative* coil-anodized aluminum that leaves the back-side of the sheet with an adhesive-friendly open pore structure – perfect for composite panel applications.

AnoGrip is a special anodizing process applied to *functional* coil-anodized aluminum – leaving both sides of the aluminum sheet with millions of microscopic open pores that lock in paints, powder coats, adhesives and more creating a permanent molecular bond.



Targeted End Applications

- Aluminum Composite Panels
- Appliance and Foodservice Panels and Trim Components
- Decorative Interior Architectural Trim and Edge Banding
- Electronic Skins & Decorative Exterior Components
- Elevator and Escalator Panels
- Emblems and Nameplates
- High Pressure Laminate Panels
- Interior Automotive & Transportation Panels and Trim Components
- Point of Purchase Displays
- Printed Circuit Boards

Features & Benefits

- **Superior Bonding** – The bond between AnoGrip and Adhere products and the coating or adhesive is a molecular bond rather than a surface bond – meaning that the bond will not de-laminate or peel over time, nor is it effected by weather or water elements that can cause delaminating over time.
- **Cost Savings** – AnoGrip and Adhere arrive clean and ready for immediate production – no need to clean, prime or coat the material surface to maximize adhesion prior to production.

Production Capabilities

The following summarizes our standard AnoGrip and Adhere production capabilities. Requests outside of our stated standard capabilities will be reviewed on an inquiry by inquiry basis to see if we can offer a custom solution to you.

Product	Imperial	Metric
Adhere	0.004" – 0.032" x 50.0"	.1mm - .8mm x 1270mm
	0.004" – 0.050" x 48.0"	.1mm – 1.3mm x 1220mm
	0.051" – 0.060" x 24.0"	1.3mm – 1.5mm x 610mm
AnoGrip	0.013" – 0.050" x 62.0"	.33mm – 1.3mm x 1575mm
	0.013" – 0.080" x 48.0"	.33mm – 2.0mm x 1220mm
	0.081" – 0.090" x 33.0"	2.0mm – 2.3mm x 838mm
	0.091" – 0.100" x 26.0"	2.3mm – 2.54mm x 660mm

Performance Standards

Adhesion

- **Adhere**
 - Foil Gauge Products (0.004"-0.0071") – Minimum 8 pounds per inch.
 - Commercial Gauge Products (0.0072" and greater) – Minimum 10 pounds per inch.
- **AnoGrip**
 - Medium Adhesion – Minimum 10 pounds per inch.
 - Heavy Adhesion – Minimum 20 pounds per inch.

Shelf Life – Adhere and AnoGrip products are guaranteed to maintain the same pull strength as outlined above for a minimum of 6-months from date of manufacture with proper storage and handling.

Additional Brand / Product Information

Adhere Visual Appearance

The Adhere process is applied to the back side of pre-anodized aluminum and will have a milky appearance. Variations in the appearance on the Adhere side do not indicate a variance in the pore structure and will not impact the product performance.

High Pressure Laminate Applications

AnoGrip and Adhere products have performed successfully within a High Pressure Laminate (HPL) process under the following standard conditions:

- 320F heat
- High Pressure / High Heat – 1 Hour
- Bonded with a phenolic resin soaked core sheet.

We recommend that all customers qualify AnoGrip and Adhere products within their own production process prior to ordering full production quantities.